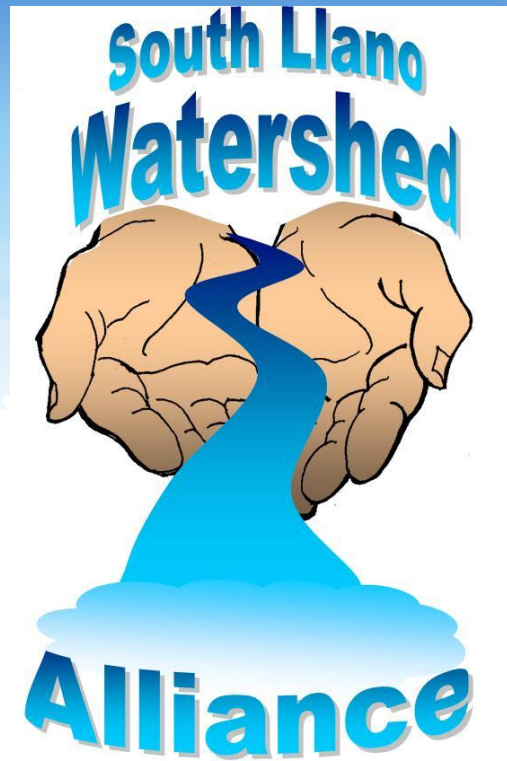


Watershed Week in Review

January 23, 2015



Time to Renew

**Happy 2015 from the
South Llano
Watershed Alliance**

The beginning of each
year is the time for
membership renewal
with the SLWA.

Individual
Membership is \$20

Business Sponsorship
is \$100

[Click here for more
info](#)

Memberships are the primary
revenue source for the South
Llano Watershed Alliance

Planning Meeting

Members of the South Llano Watershed Alliance
met last Saturday in Junction to plan activities for
the coming year...

(see page 2)

Save the Date!

Stakeholder Meeting

Feb 5, 2015

Upper Llano River
Watershed Protection
Plan Stakeholder
Meeting at Texas Tech-
Junction-[details](#)

Oasis Restoration Workshop

April 18, 2015

Stay tuned for details about
this restoration workshop
coming to Junction in April

In the News

UPPER LLANO RIVER WATERSHED PROTECTION PLAN NEWSLETTER



Want to learn more about this cool looking creature that lives in the Llano? Check out the latest edition of the [Watershed Protection Plan newsletter](#)

Coming to a stream gage near you...

Want to know the flows of the Llano while on the go? Check out USGS' [new mobile app](#).

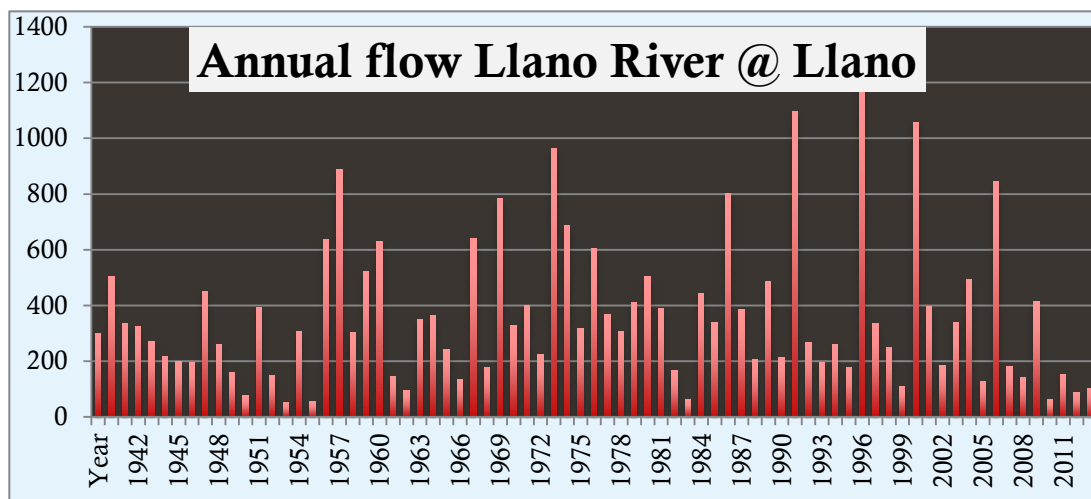
Making plans for the coming year

Last Saturday, members of the SLWA met at [Hacienda Maria at Native American Seed](#) to brainstorm new ideas for the coming year.

Many thanks to the Neimans for sharing their great venue.

[Check out what's in store for the Alliance](#)





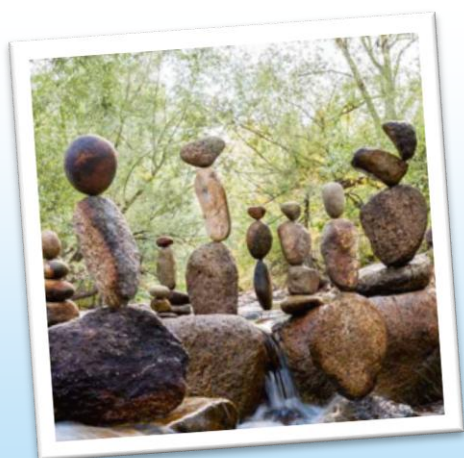
Flows of the Llano

The *Llano River @ Llano* had an average flow of 102 cfs in 2014; in 2013, the average flow was 88 cfs. These two years ranked as the 6th and 8th lowest annual flows since the gauge was installed in 1940. The year with the lowest flow was 1954, with 50 cfs.

However, the five-year average flow of the *Llano River @ Llano* was 163 cfs. This is the **LOWEST FIVE-YEAR AVERAGE** ever recorded.

For the *Llano River @ Junction*, 2013 annual flow was 79 cfs. USGS has not formally published the annual flow for 2014, but preliminary calculations show that the annual flow was 51 cfs. That 2014 is less than 2013 is opposite the situation at Llano. The 2014 annual flow at Junction was the 6th lowest with 1953 being the lowest annual flow with 30 cfs. The five year average flow was 80 cfs; the 5th lowest since the gauge was installed in 1916.

The period 1952-56 still is the lowest five year average at Junction with 44 cfs.



Llano Earth Art Fest

March 13-15 in Llano

*Plan to check out
this inaugural
event
[read more...](#)*

*...and while you are there,
go see the screening of the
movie "[Yakona](#)" at the
[Lantex](#)*

With El Niño odds diminishing so does hope for drought end

Last week's newsletter had an article about the decreasing odds of El Niño formation. The Drought Outlook released last week now seems to reflect the same. December's outlook showed Drought Improvement or Removal for the region. January's forecast is now for Drought to Persist.

