

# WATERSHED WEEK IN REVIEW



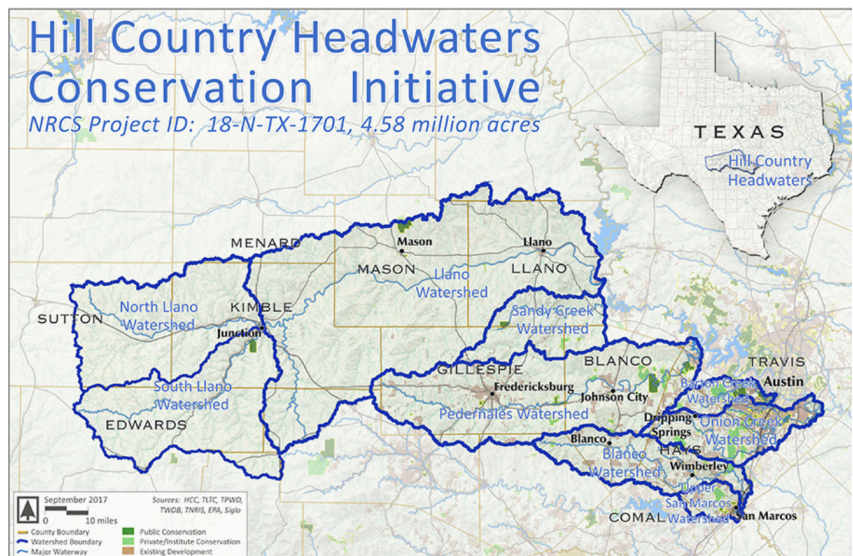
## The Remarkable Life Cycle of a Monarch

By David Hillis  
Reprinted with permission  
of *Mason County News* -  
"Mason County Science  
Corner"

This past week I enjoyed watching the Monarchs fly south across our Mason County ranch, pausing to feed on Gayfeather and Cow Pen Daisies. Sometimes I even stumble across clusters of the butterflies roosting overnight in our trees. They are on a 2,000–3,000 mile journey to a specific fir forest in the mountains of Michoacan, Mexico where they have never...  
[read on](#)

## Deadline is a Week Away

### HILL COUNTRY HEADWATERS CONSERVATION INITIATIVE

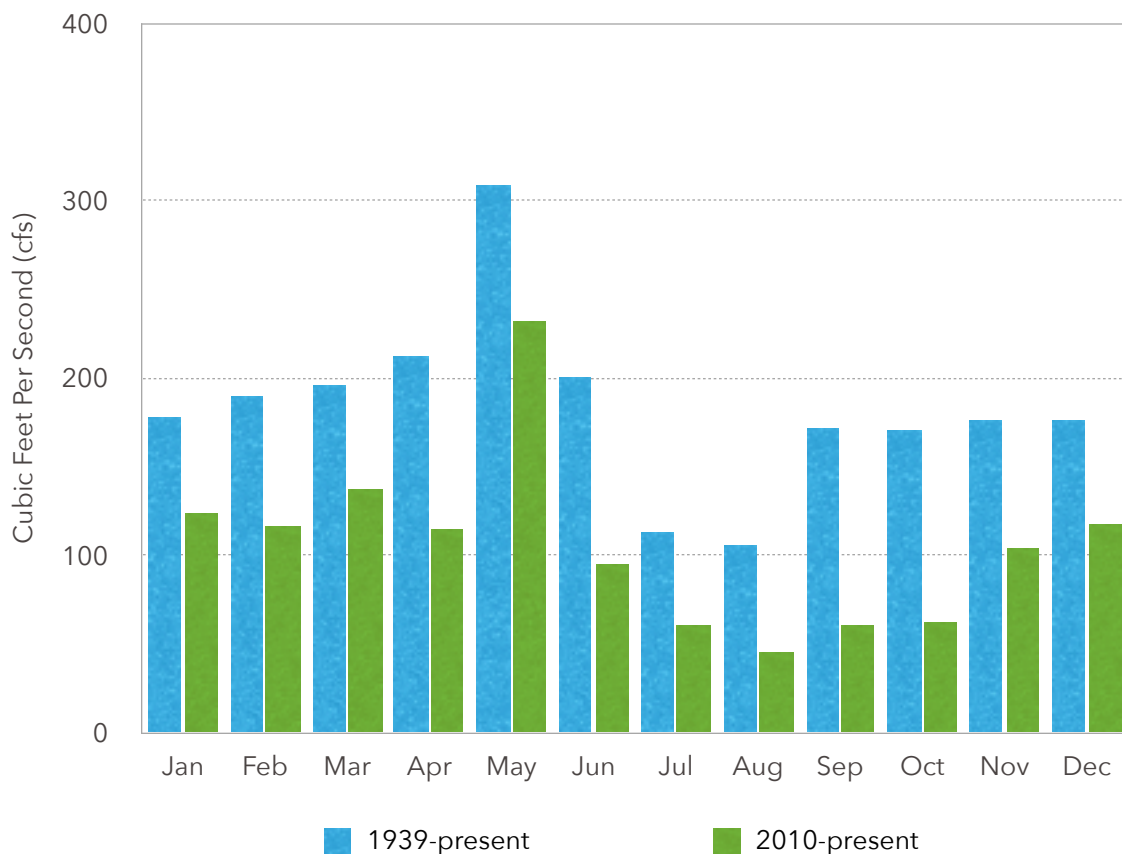


If you are located within one of the watersheds above and you would like to implement a project on your land that improves riparian habitat, manages brush, improves grass and trees, fences sensitive areas or improves irrigation efficiency, to name a few, please consider completing a Pre-Application form for consideration by 30 October. See page 3 for more details.

## Flows of the Llano

This week we take a look at median monthly flows for the Llano at Llano. The gage is located 1/3 mile downstream of the Llano River Bridge on private property.

### Monthly Median Flows - Llano River @ Llano



The gage on the Llano at Llano has been recording discharge since 1939. The chart above compares the historic median monthly discharge against median discharge for the last 10 years, the second driest decade recorded after the 1950s.

Monthly flows over the last decade are 36-75% of the historic monthly flows with September being the lowest month below normal. October is the second lowest month that is below normal, despite the floods from 2018.

## **Fund those Stewardship Practices you Always Dreamed of..**

**Are you a conservation-minded rancher, farmer or  
wildlife enthusiast looking to enhance the water, soils or  
wildlife on your land?**

**This may be the Place for You!**

The Llano River Alliance in partnership with the Hill Country Conservancy and 18 other partners is now offering land stewardship financial assistance, as part of the Hill Country Headwaters Conservation Initiative, to subsidize important land stewardship projects. The Initiative is financed through a \$5.15 million award from NRCS as part of their Regional Conservation Partnership Program (RCPP)



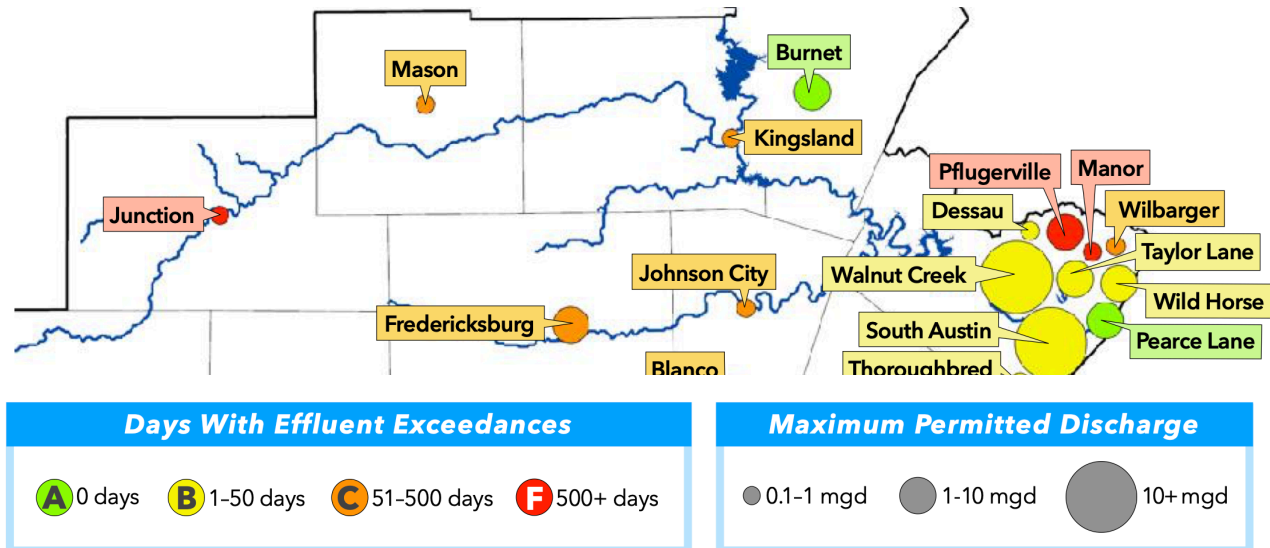
Zesch Ranch Grassland and Habitat Health Stewardship Project

Supported practices include riparian habitat enhancement, brush management, grass and for planting, tree planting, prescribed fire, planned grazing, fencing of sensitive areas, and irrigation efficiency improvements.

**Pre-Applications are now being accepted until  
October 30, so don't delay.**

For More Information on the Initiative and to Submit a  
Pre-Application

## Pristine to Polluted - Sewage Problems and Solutions in the Texas Hill Country



The Llano and most Hill Country stream have very few naturally occurring nutrients in them. As such, they are very susceptible to algal blooms caused by nitrogen from waste-water treatment plants. These algal blooms cause oxygen depletion in the water, harming fish and other aquatic life.

The non-profit *Save Barton Creek* recently issued a Hill Country Sewage Scorecard for 48 municipal sewage treatment plants with discharge permits from the Texas Commission on Environmental Quality (TCEQ). These discharge permits regulate the type and volume of pollutant that treatment plants may discharge into streams.

Over a 3 1/2 year period, the study finds that 39 facilities exceeded at least one pollutant limit in their permit. Three facilities in the Llano watershed discharge to surface water; the City of Llano uses land application and is not included in the scorecard. Of the three, both Kingsland Municipal Utility District and the City of Mason received a grade of 'C' with 11 and 19 exceedances respectively. The City of Junction received a grade of 'F' for 52 exceedances.

More on this topic next week.





**SATURDAY, OCT 24, 2020**  
**ALL VIRTUAL. ALL ONLINE. ALL SAFE.**  
**WHERE EVERYONE GETS A FRONT ROW SEAT.**

**A Hill Country Alliance Event**

**Welcome. Come on in. Take a front row seat.**

**We're going virtual – Saturday, Oct. 24!**

**It's all FREE. Just click here to register and save the date!**

**More Info**



## **Saturday, October 24, 2020 – Program**

### **Morning and Afternoon Sessions**

Morning: 10:30 am – 12:00 pm

Afternoon: 3:00 pm – 4:30 pm

Platform: [Zoom Webinar](#) + Facebook Livestream

Tune in for engaging hosts, prerecorded video segments, live Q&A, and panel discussions!

